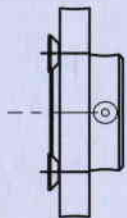


Modular System – Spindle Output Options

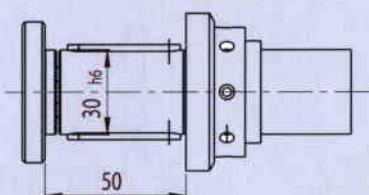
Note: Spindle outputs are designed to hold specific tools to perform a variety of tasks. Some spindle outputs cannot be used with certain aggregates. Please contact us for help selecting your outputs. Call us toll-free (800) 597-3921 or local (317) 803-8000.

Modular spindle outputs (highlighted in blue boxes) are all interchangeable on the aggregates that support the modular spindle output system.

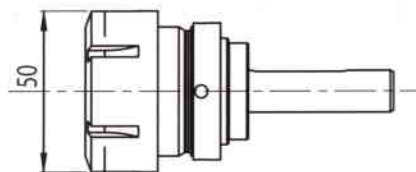
S1 Modular Saw Spindle



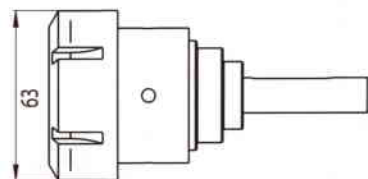
07 Modular Arbor



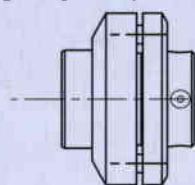
R6 ER 32 collet and nut
Range: 3mm – 20mm



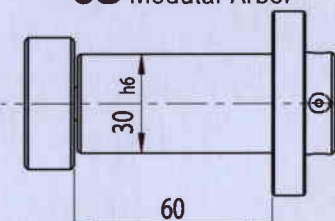
R7 ER 40 - for Soft-Touch
Range: 4mm – 26mm



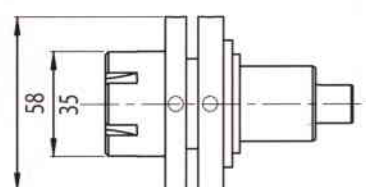
P1 Modular Saw Arbor
Range: 1.5mm-4mm tool shank



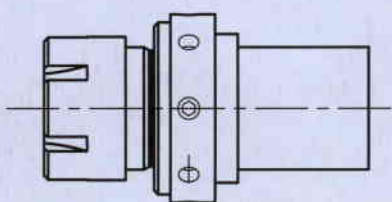
08 Modular Arbor



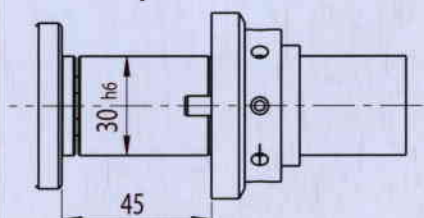
K1 ER 25 collet and nut



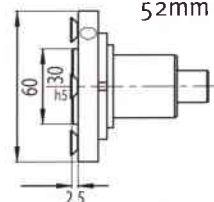
M5 Modular ER 25



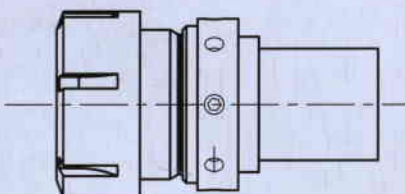
09 Modular Arbor



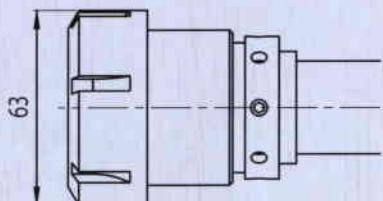
K2 Combi spindle, 45mm and 52mm bolt circle



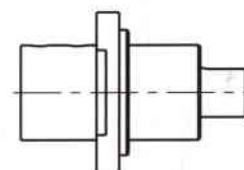
R6 Modular ER 32



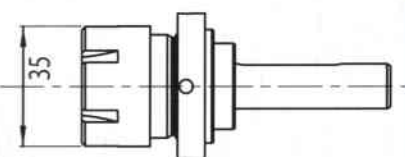
R7 Modular ER 40



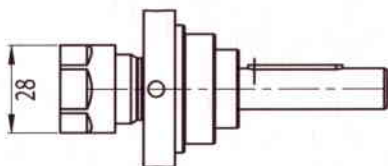
W3 Weldon
DIN 1835 B Ø10H6



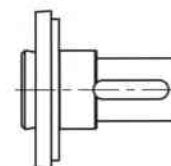
M5 ER 25 collet and nut
Range: 1mm – 16mm



R3 ER 16 collet and nut
Range: 0.5mm – 10mm

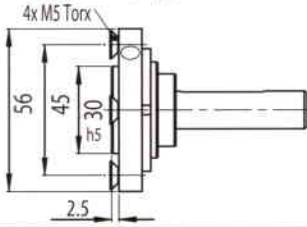


W4 Weldon
DIN 1835 B Ø12H6



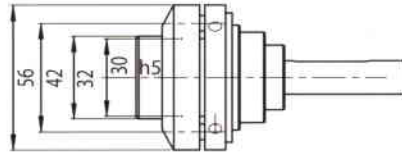
Spindle Output Options

S1 Saw Spindle, 45mm bolt circle



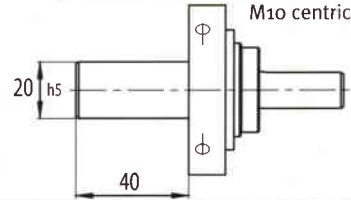
P1 Prolock spindle

Range: 1.5mm-4mm tool shank

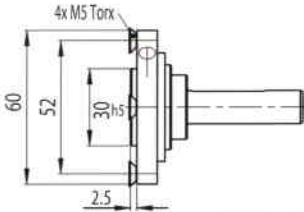


O3 Special spindle $\varnothing 20h5$

2x $\varnothing 6H7$, 2x M6 - bolt circle 32mm
M10 central

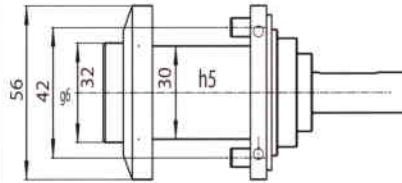


S2 Saw Spindle, 52mm bolt circle



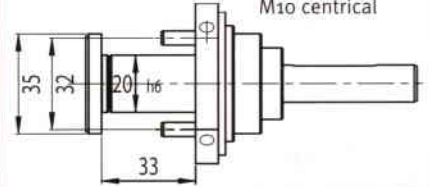
P2 Prolock spindle

Range: mm - 52mm

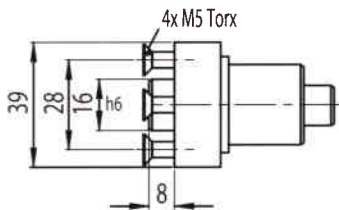


O5 Special spindle $\varnothing 20h6$

2x $\varnothing 5H7$, 2x M5 - bolt circle 32mm
M10 central

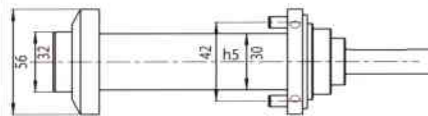


O1 Saw Spindle



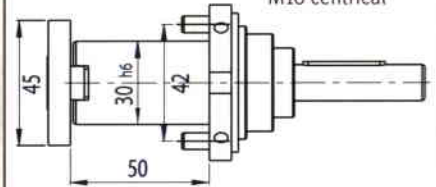
P3 Prolock spindle

Range: 98mm - 102mm



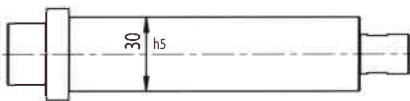
10 Special spindle $\varnothing 30$

2x $\varnothing 6H7$, 2x M5 - bolt circle 42mm
M10 central



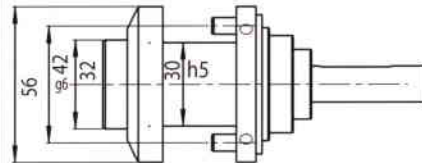
UHM12030

Spindle for moulder head



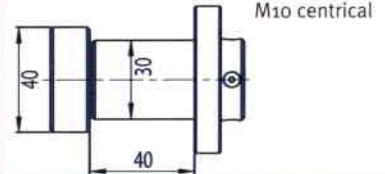
P4 Prolock spindle

Range: 28mm - 32mm



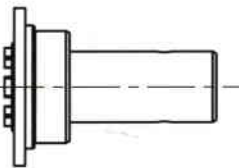
12 Special spindle $\varnothing 30h5$

2x M5 - bolt circle 45mm;
 $\varnothing 6H7$, bolt circle 42mm
M10 central



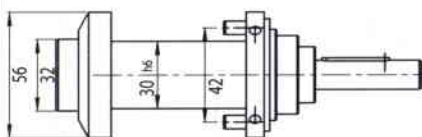
I3 ER 16 collet inside

Range: 1mm - 10mm



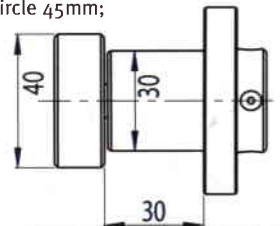
P5 Prolock spindle

Range: 28mm - 32mm



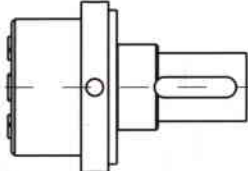
13 Special spindle $\varnothing 30h5$

2x M5 - bolt circle 45mm;
 $\varnothing 6H7$, bolt circle 42mm
M10 central



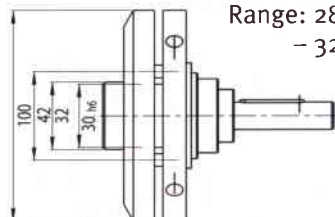
I5 ER 25 collet inside

Range: 1mm - 16mm



P6 Prolock spindle

Range: 28mm - 32mm



N1 Notch whistle

DIN 1835 E $\varnothing 6H5$

